



OHANA

St Peters

A New Benchmark of Luxury Family Living in St Peters

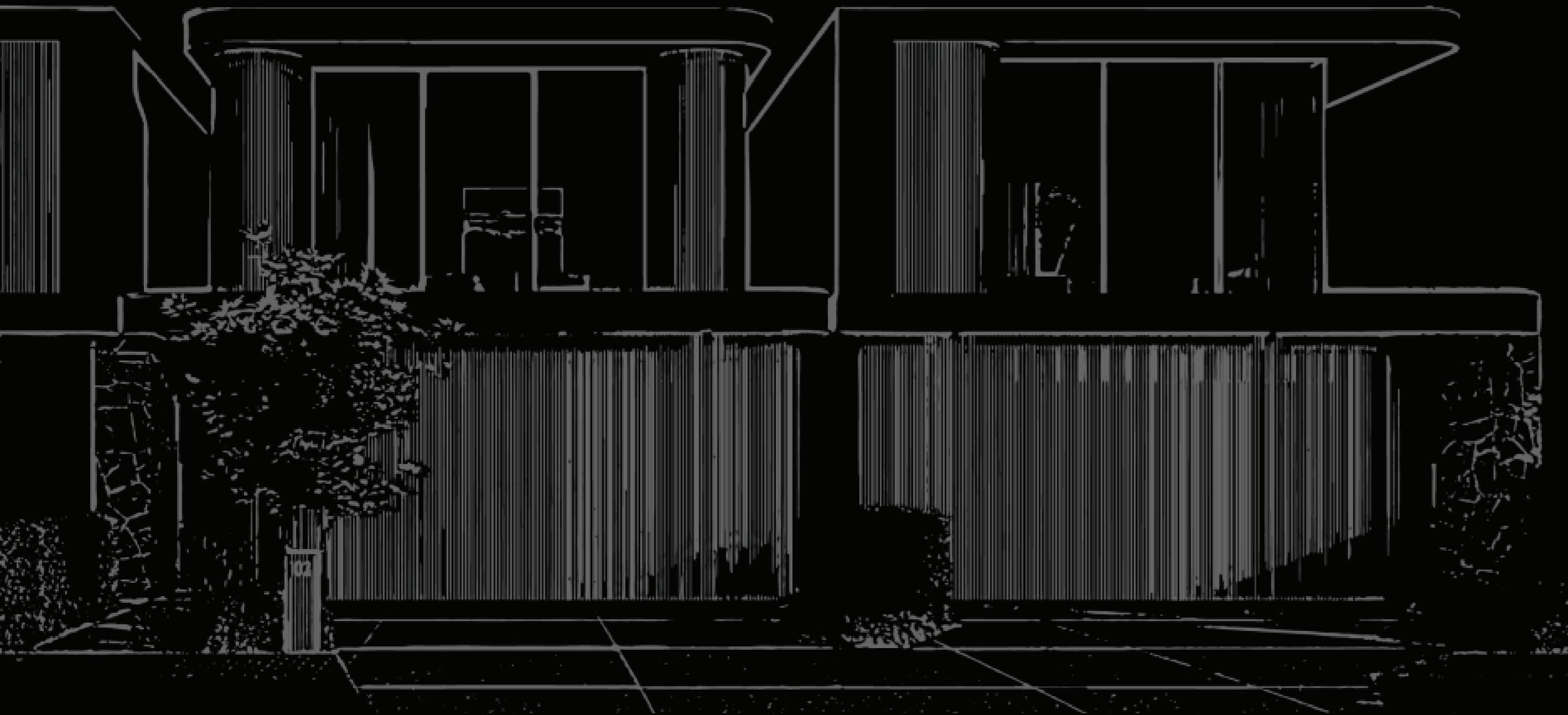




Ohana is more than a home, it is an urban oasis



METICULOUSLY CRAFTED BY THINK ARCHITECTS



Ohana redefines architectural excellence, offering a seamless fusion of form, function, and style with an unparalleled sense of sophistication.

“ Perched in the heart of Adelaide’s most picturesque suburb, St Peters, Ohana is a testament to high-end luxury living intertwined with the lush, natural beauty that defines the area. Enveloped by the serene landscapes of the River Torrens and nestled within this character-filled enclave, Ohana presents the perfect harmony between modern design and its breathtaking surroundings-crafting an extraordinary living experience unlike any other. ”

Adam Cavioto

Architect

Beautiful Interiors by Broadfeather Design



Features to Love

- Torrens titled homes
- Three architecturally designed contemporary residences by Think Architects
- Feature facade with timber battens, curves, and feature stone pier
- Western Red Cedar timber-clad panel tilt garage door and surrounds
- Custom timber entry door to match garage battens
- Soft landscaped surrounds to provide a natural ambiance
- Expansive open-living area with 3-meter high ceilings
- Bespoke joinery and interior design by Broadfeather Design
- Exclusive feature panelling on kitchen island benchtop with waterfall design
- Premium porcelain stone benchtops throughout the home
- Spacious walk-in pantry
- 900 mm SMEG kitchen appliances
- Engineered timber flooring and premium carpets

Features to Love

- Opulent master bedroom with ensuite, custom walk-in robe, and private balcony
- Master ensuite with his and her vanity, featuring LED mirrors, free-standing bathtub, skylight, and double shower
- Additional guest bedroom with walk-in robe and ensuite on the ground floor
- Crafted for convenience and functionality, with a spacious laundry and mudroom area
- Floor-to-ceiling tiles in all bathrooms and ensuite
- Sleek and modern feature Powder Room
- High-end tapware and sanitaryware finishes
- Ample storage throughout the home
- Square set cornices
- Feature Milkcan parcel delivery letterboxes
- Home secured with video intercom and security systems
- Ducted reverse cycle, zoned air conditioning
- Customize your home with luxurious upgrades such as a swimming pool, outdoor kitchen, Bar/wine Cellar, fireplace, and TV joinery



Indulge in Bespoke Luxury



Luxury Redefined Elevated Comfort

Experience ultimate privacy and elegance in an opulent master suite, featuring a private balcony, an ensuite with a skylight, and custom His & Her walk-in robes. Guests enjoy equal luxury in a ground-floor bedroom, complete with a walk-in robe and ensuite, offering a sophisticated retreat for all.



Choice of two captivating color palettes



LIGHT THEME

The 'Light' theme, featuring soft, airy colors for bright and inviting interiors



DARK THEME

The 'Dark' theme, inspired by forest woods and warm tones, offering tranquility.



Prestige Living Prime Location

Positioned in an elite neighbourhood, these residences offer an exceptional convenience with access to top-tier schools like St Peter's College and Adelaide Botanic High School. A short drive connects you to the CBD, while nearby shops, restaurants, and serene parks provide the perfect blend of urban charm and natural beauty. Luxurious living, with everything you desire just moments away.



Experience Life at Its Finest!



Meet the Exceptional Team Dedicated to Excellence



O H A N A

St Peters



CONTACT RAY WHITE UNLEY

Jason Mills | 0431 809 306

jason.mills@raywhite.com

Alice Moorhouse | 0418 821 438

alice.moorhouse@raywhite.com

VISIT THE SITE

25A River Street, St Peters, SA 5069

Disclaimer: Every effort has been made to ensure that the information contained in this document is accurate at the time of publication. However, no liability will be accepted for any errors or omissions.